

8101 Minex 3~

Grindex drainage pumps are designed for professional use in tough applications like mines, construction sites, tunnel sites and other demanding industries. They are designed for pumping water that may contain solids

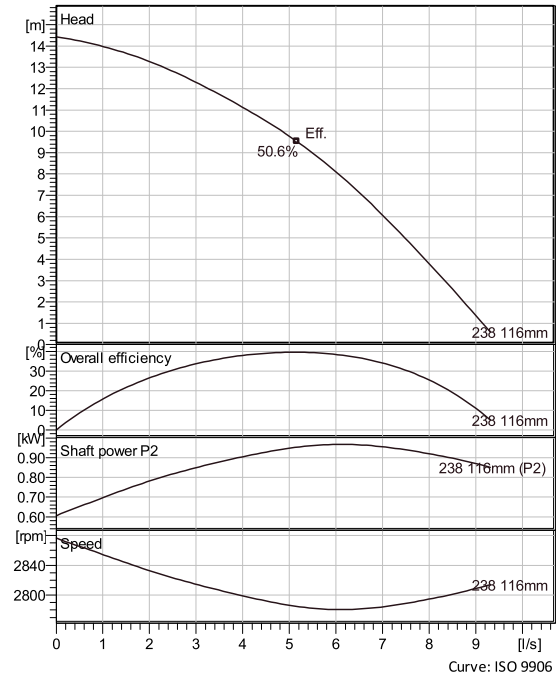
– up to the size of the strainer holes. Grindex drainage pumps are designed for continuous, unattended operation. They have proven their reliability and dependable performance in demanding areas like building and construction, mining, tunnelling, quarries, industries and rental applications.



Technical specification



Curves according to: Water, pure [100%], 4 °C, 999.9 kg/m³, 1.569 mm²/s



Configuration

Motor number K8101.172 13-06-2BB-W 1.2KW	Installation type S - Portable Semi permanent, Wet
Impeller diameter 116 mm	Discharge diameter 50 mm

Pump information

Impeller diameter 116 mm
Discharge diameter 50 mm
Inlet diameter
Maximum operating speed 2715 rpm
Number of blades 2

Materials

Impeller Hard-Iron

Project Xylect-20726120
Block 0

Created by João Santos **Last update** 10/8/2024
Created on 10/8/2024

8101 Minex 3~

Technical specification



Motor - General

Motor number K8101.172 13-06-2BB-W 1.2KW	Phases 3~	Rated speed 2715 rpm	Rated power 1.2 kW
Approval No	Number of poles 2	Rated current 2.6 A	Stator variant 8
Frequency 50 Hz	Rated voltage 400 V	Insulation class F	Type of Duty S1

Motor - Technical

Power factor - 1/1 Load 0.87	Motor efficiency - 1/1 Load 75.1 %	Total moment of inertia 0.00234 kg m ²	Starts per hour max. 15
Power factor - 3/4 Load 0.82	Motor efficiency - 3/4 Load 78.8 %	Starting current, direct starting 12 A	
Power factor - 1/2 Load 0.70	Motor efficiency - 1/2 Load 79.8 %	Starting current, star-delta 4 A	

Project	Xylect-20726120	Created by	João Santos	Last update	10/8/2024
Block	0	Created on	10/8/2024		

8101 Minex 3~

Performance curve

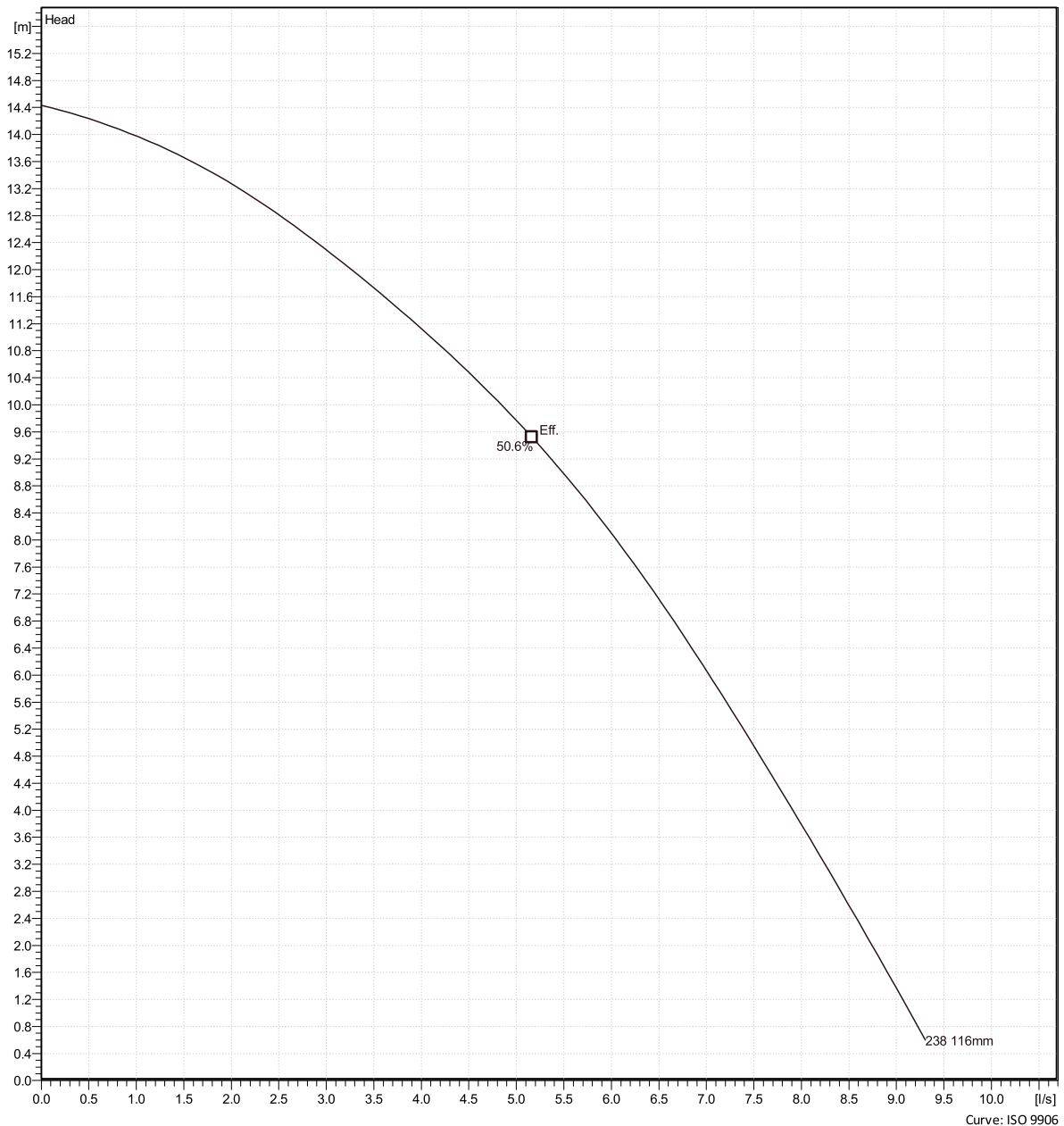


Duty point

Flow

Head

Curves according to: Water, pure [100%], 4 °C, 999.9 kg/m³, 1.569 mm²/s



Project Xylect-20726120
Block 0

Created by João Santos
Created on 10/8/2024

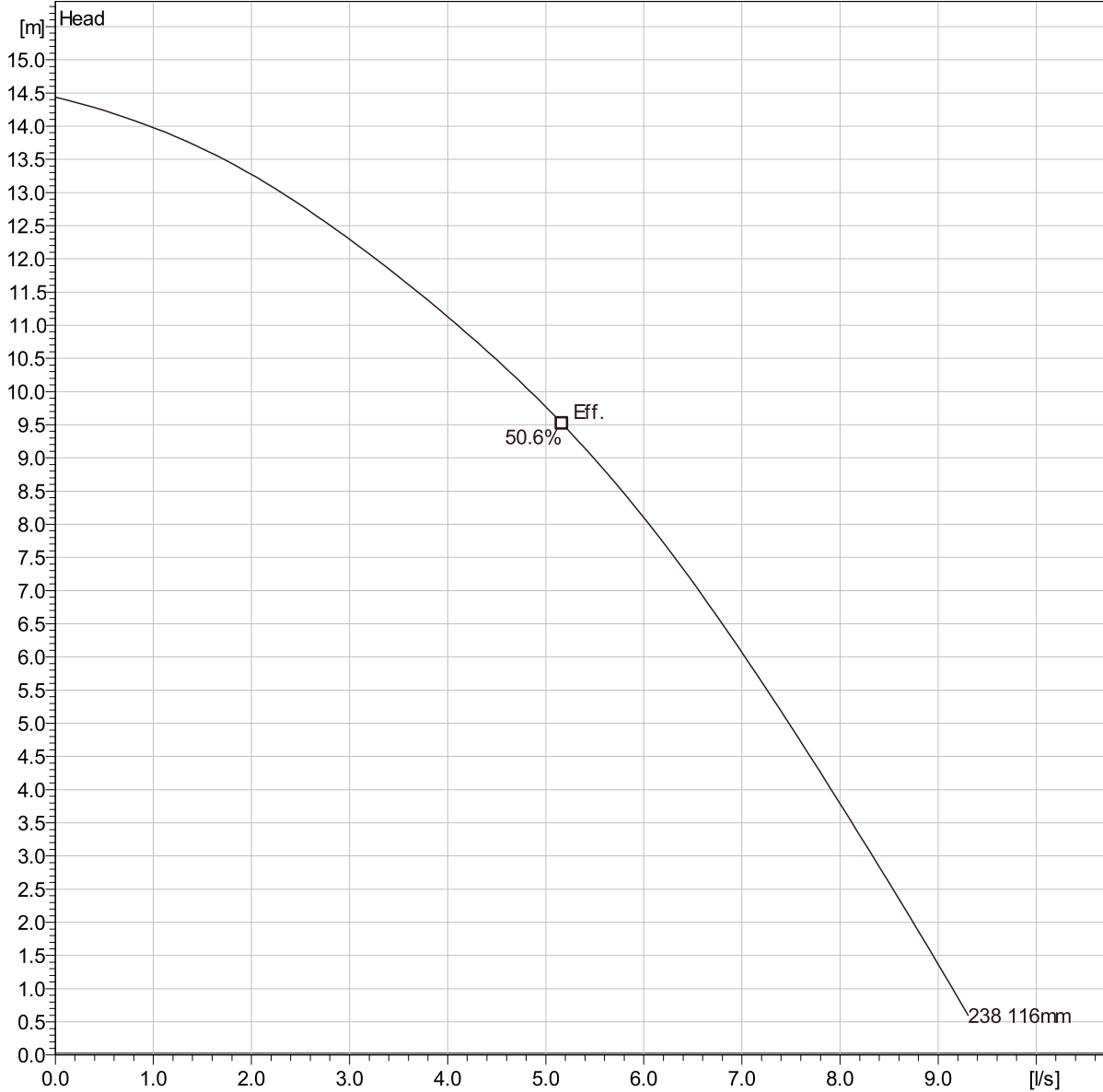
Last update 10/8/2024

8101 Minex 3~

Duty Analysis



Curves according to: Water, pure [100%], 4 °C, 999.9 kg/m³, 1.569 mm²/s



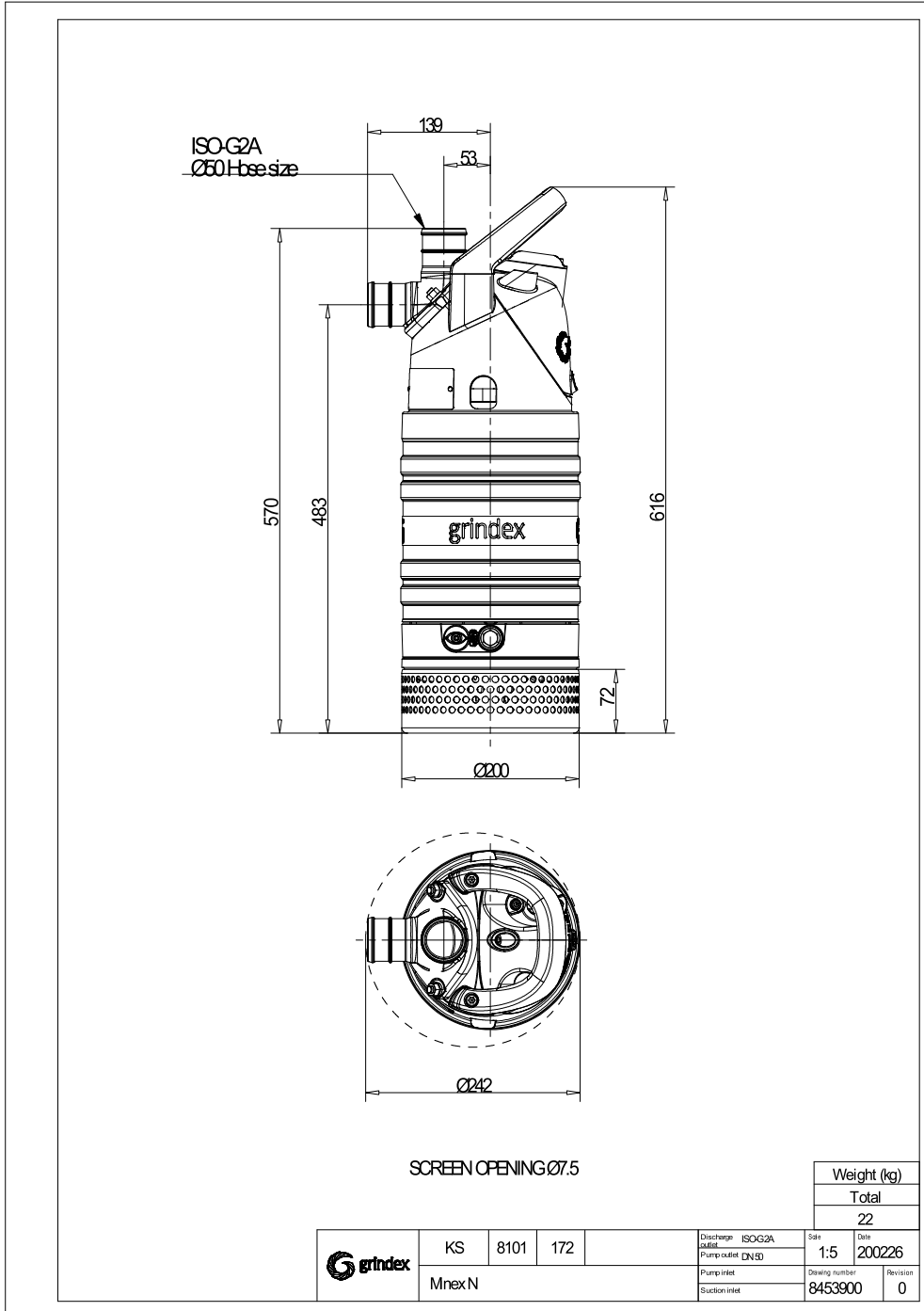
Curve: ISO 9906

Operating characteristics

Pumps/Systems	Flow	Head	Shaft power	Flow	Head	Shaft power	Hydr. eff.	Specific Energy	NPSHr
---------------	------	------	-------------	------	------	-------------	------------	-----------------	-------

Project	Xylect-20726120	Created by	João Santos	Last update	10/8/2024
Block	0	Created on	10/8/2024		

8101 Minex 3~
Dimensional drawing



Project	Xylect-20726120	Created by	João Santos	Last update	10/8/2024
Block	0	Created on	10/8/2024		