

Major N

Serial No 8104.181 2531229



Introduction

Purpose of this manual

The purpose of this manual is to provide necessary information on spare parts and accessories order.

Disclaimer

Always use genuine Grindex parts. The use of other spare parts or accessories can invalidate any claims for warranty or compensation. Grindex does not take any responsibility for damages that are caused by the use of non-original parts. For more information, contact your local sales and service representative.

Data for ordering spare parts

The following information is needed for spare part orders:

- Serial number of the product
- Part number
- Quantity of bulk material, see * in tables

Specially approved products

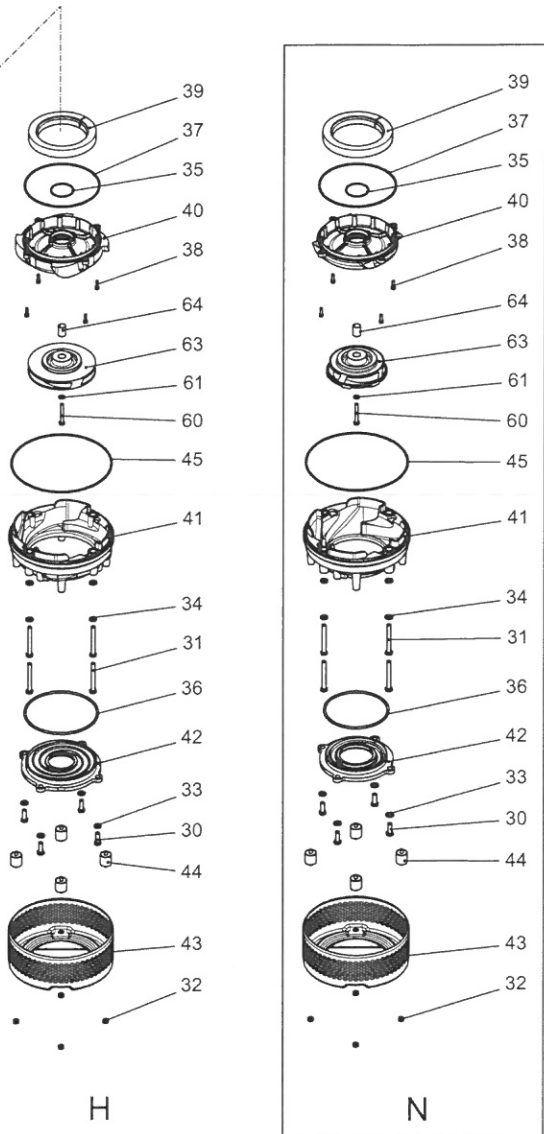
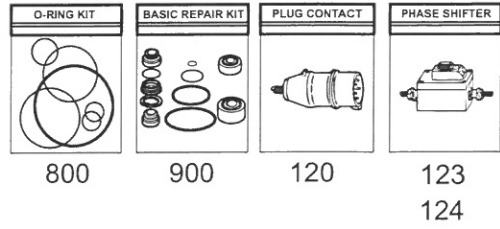
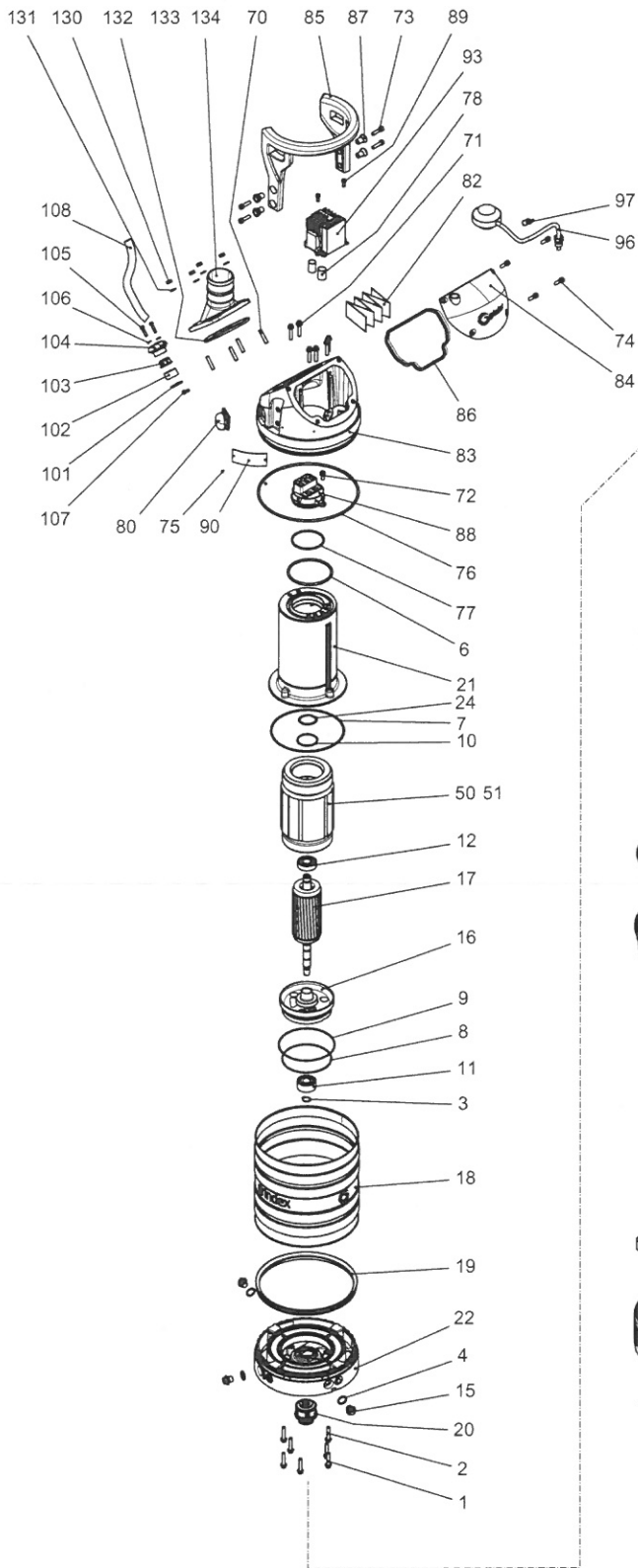
Qualification of personnel

Only Grindex or Grindex-authorized service personnel may undertake repair work on Ex-approved products.

Dimensional accuracy inspection

Spare parts marked with (Ex) after the part number are subject to dimensional accuracy inspection.

Exploded View

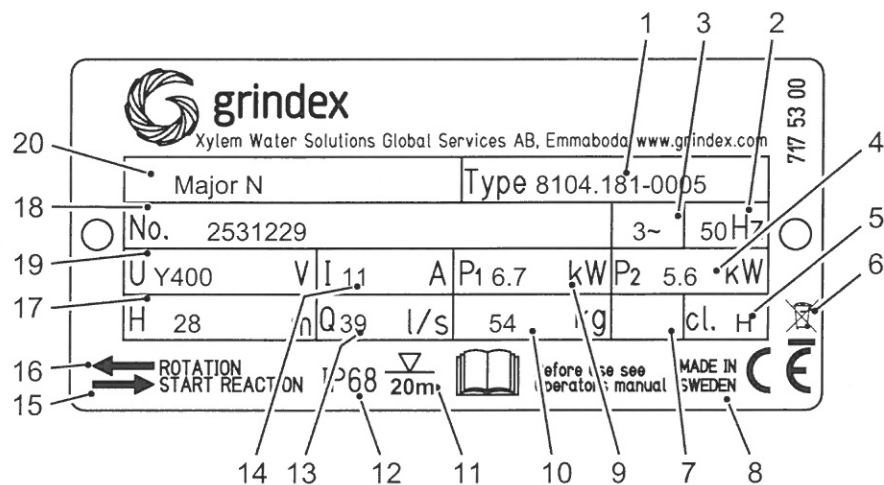


20147C_expl_view_8103_8104_181_880

Product Description

The data plate

The data plate is a metal label that is located on the main body of the products. The data plate lists key product specifications. Specially approved products also have an approval plate.



WS011380B

Data plate interpretation

- | | |
|------------------------------|--|
| 1. Pump type number | 11. Maximum submersion depth |
| 2. Frequency | 12. Degree of protection |
| 3. Phases, type of current | 13. Maximum capacity |
| 4. Rated shaft power | 14. Rated current |
| 5. Thermal class | 15. Direction of the start reaction |
| 6. WEEE-Directive symbol | 16. Direction of the impeller rotation |
| 7. Locked rotor code-letter | 17. Maximum head |
| 8. Country of origin | 18. Serial number |
| 9. Maximum power consumption | 19. Rated voltage |
| 10. Product weight | 20. Pump model |

(1 kg = 2.2 pound, 1 L = 0.26 US gallon, 1 L = 0.22 UK gallon)

Recommended spare parts

See REC. column: A = Parts for inspection and maintenance
 B = Parts for major overhaul

Parts List

Grindex Major N

Serial No 8104.181 2531229

Item no	Xylem		Rec	Denomination	Qty/ord.
	Part no	Type			
1	81 64 92			Hexagon flange screw M8X40-A2-70	4
2	81 64 92			Hexagon flange screw M8X40-A2-70	3
3	82 58 92			Retaining ring SGA 20	1
4	82 72 95			O-ring 19.2X3 FPM	3
6	82 74 15			O-ring 114.3X5.7 NBR	1
7	82 78 29			O-ring 192.0X4.0 NBR	1
8	82 74 79			O-ring 129.5X3 NBR	1
9	82 74 82			O-ring 144.5X3.0 NBR	1
10	82 79 28			O-ring 52.5X3.0 FPM	1
11	83 30 14			Ball bearing 20X52X22.2 MM	1
12	83 33 13			Ball bearing 20X52X15 MM	1
15	428 22 17			Inspection screw BRASS	3
16	693 39 00			Bearing housing	1
17	647 84 04 (Ex)			Shaft unit	1
18	705 95 00			Cooling jacket STAINLESS STEEL	1
19	708 95 00			Seal ring	1
20	769 94 51			Mechanical seal AL203/WCCR,RSIC/RSIC FPM	1
20.1	82 68 45			Retaining ring	1
21	774 12 00			Stator housing	1
22	774 89 02			Adapter	1
23	714 26 00			Instruction label	1
24	82 56 24			Spring washer	1
30	81 41 32			Hexagon head screw M10X30-A2-70	4
31	81 56 72			Hexagon head screw M10X90-A4-80	4
32	82 23 32			Hexagon nut M8-A4-70	4
33	82 35 76			Plain washer 10.5X20X2-A4-170HV	4
34	82 35 76			Plain washer 10.5X20X2-A4-170HV	4
35	82 75 19			O-ring 54.5X3 FPM	1
36	82 74 85			O-ring 159.3X5.7 NBR	1
37	82 71 34			O-ring 192X4.0 FPM	1
38	83 02 77			Hex.socket hd screw M6X20-A4-70	4
39	83 94 68			Pressure equalizer L=510 MM	1
40	693 45 00			Seal housing cov.coa	1
41	693 49 00			Diffuser coat. NBR	1
42	693 55 00			Suction cover	1
43	693 61 01			Strainer	1

Parts List

Item no	Xylem		Rec	Denomination	Qty/ord.
	Part no	Type			
44	693 62 00			Damper complete	4
50	694 53 13			Stator 15-14-2b	1
60	81 56 58			Hexagon head screw M8X60-A4-80	1
61	82 35 16			Plain washer 8.4X16X1.6-A2-140HV	1
63	693 59 50			Impeller	1
64	779 89 50			Sleeve unit	1
70	83 00 39			Stud	4
71	81 64 92			Hexagon flange screw M8X40-A2-70	6
72	82 00 35			Hex.socket hd screw M8X30-A2-70	1
73	82 00 35			Hex.socket hd screw M8X30-A2-70	4
74	82 00 35			Hex.socket hd screw M8X30-A2-70	4
75	82 20 88			Drive screw 4X5-A2/A4	2
76	82 74 99			O-ring 259.3X5.7 NBR	1
77	82 78 15			O-ring 78X4 NBR	1
78	94 05 89			Insulating hose D=18 MM	0.04 m
80	706 11 00			Air release valve	1
82	773 48 06			Connection plate	1
83	774 08 00			Main cover	1
84	774 09 00			Cover	1
85	774 10 00			Handle	1
86	774 11 00			Gasket	1
87	774 26 00			Sleeve	4
89	82 00 13			Hex.socket hd screw M6X16-A2-70	2
90	630 85 00			Plate-blank	1
91	718 05 00			Sticker CUT HAZARD	1
93	774 90 19			Starter unit	1
93.1	774 16 00			Holder	1
93.4	752 96 05			Motor protector SMART	1
93.5	84 02 50			Contacteur	1
93.6	83 02 44			Hex.socket hd screw M4X12-A4-70	2
93.7	82 26 69			Lock nut	2
93.8	83 02 44			Hex.socket hd screw M4X12-A4-70	2
93.9	82 26 69			Lock nut	2
93.12	773 42 02			Cable set	1
93.14	773 42 04			Cable set	1
93.16	773 42 06			Cable set	1
93.17	573 58 62			Single-core cable	1
93.18	717 52 00			Cable set	1
101	82 40 61			Plain washer 24.5X35X2-A2-70	1
102	84 37 96			Seal sleeve (12)-14 MM NBR	1
103	678 58 14			Cable clip 12-(14) MM	1
104	686 87 00			Entrance flange (10)-20 MM	1
105	82 00 17			Hex.socket hd screw M6X25-A2-70	2

Parts List

Xylem					
Item no	Part no	Type	Rec	Denomination	Qty/ord.
106	82 35 73			Plain washer 6.4X12X1.6-A4-170HV	2
107	82 00 13			Hex.socket hd screw M6X16-A2-70	1
108	773 47 06			Motor cable unit	1
123	94 20 42			Motor cable subcab 4G2.5	1.4 m
124	711 27 00			Phase shifter	1
125	721 25 01			Sticker	1
130	82 23 32			Hexagon nut M8-A4-70	4
131	82 35 16			Plain washer 8.4X16X1.6-A2-140HV	4
132	82 74 18			O-ring 129.3X5.7 NBR	1
133	774 14 00			Discharge connection 4"	1
800	782 47 00			O-ring kit	1
801	693 72 01			Zinc anode kit	1
900	782 81 08			Basic repair kit	1
903	731 67 00			Low suction cuff	1
	82 72 95			O-ring 19.2X3 FPM	6
...
...
...
...

Xylem|'zîləm|

- 1) The tissue in plants that brings water upward from the roots;
- 2) a leading global water technology company.

We're a global team unified in a common purpose: creating advanced technology solutions to the world's water challenges. Developing new technologies that will improve the way water is used, conserved, and re-used in the future is central to our work. Our products and services move, treat, analyze, monitor and return water to the environment, in public utility, industrial, residential and commercial building services, and agricultural settings. With its October 2016 acquisition of Sensus, Xylem added smart metering, network technologies and advanced data analytics for water, gas and electric utilities to its portfolio of solutions. In more than 150 countries, we have strong, long-standing relationships with customers who know us for our powerful combination of leading product brands and applications expertise with a strong focus on developing comprehensive, sustainable solutions.

For more information on how Xylem can help you, go to www.xylem.com

XYLEM WATER SOL.PORTUGAL,UNIP.LDA.
ESTRADA NACIONAL 10, KM 131
PARQUE TEJO - BLOCO D
2625-445 FORTE DE CASA - LISBOA
PORTUGAL
Telephone No: 2109-90929



Xylem Water Solutions Global
Services AB
361 80 Emmaboda
Sweden
Tel: +46 471 24 70 00
Fax: +46 471 24 74 01
<http://tpi.xyleminc.com>