

TH

5,5.15 P

5,5.15

- **Lowered design** for great stability
- Available with **Deutz Stage V and IIIA** engines
- Available in two engine sizes, 55 kW and 75 kW, to suit your needs
- Standard pivoting stabilisers for optimised lifting capacities up to 5.5 tonnes
- **350 bar L/S** hydraulic system
- **4WD**

MAIN SECTORS



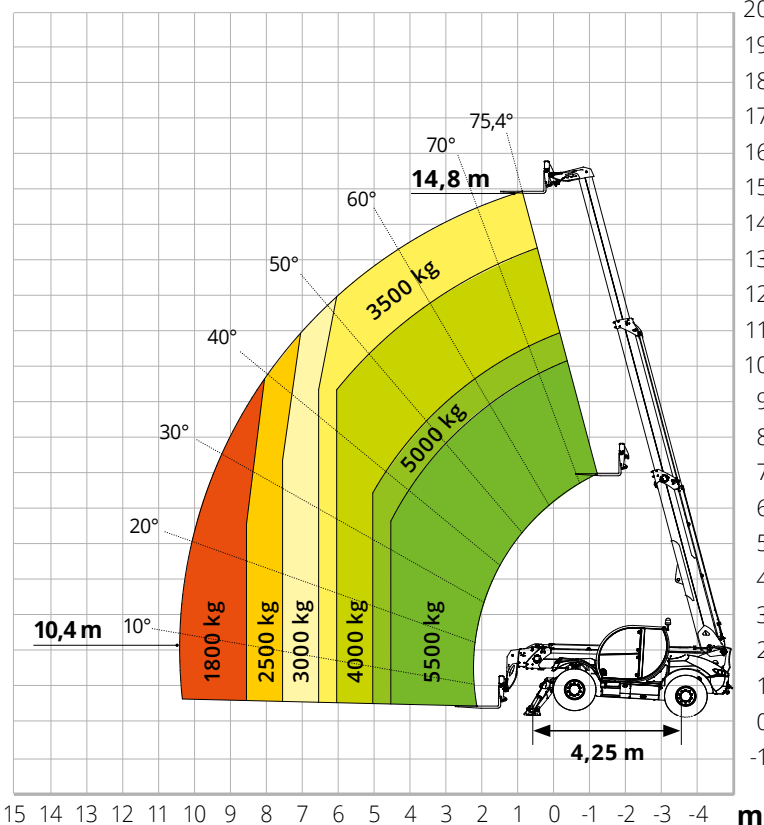
INDUSTRY



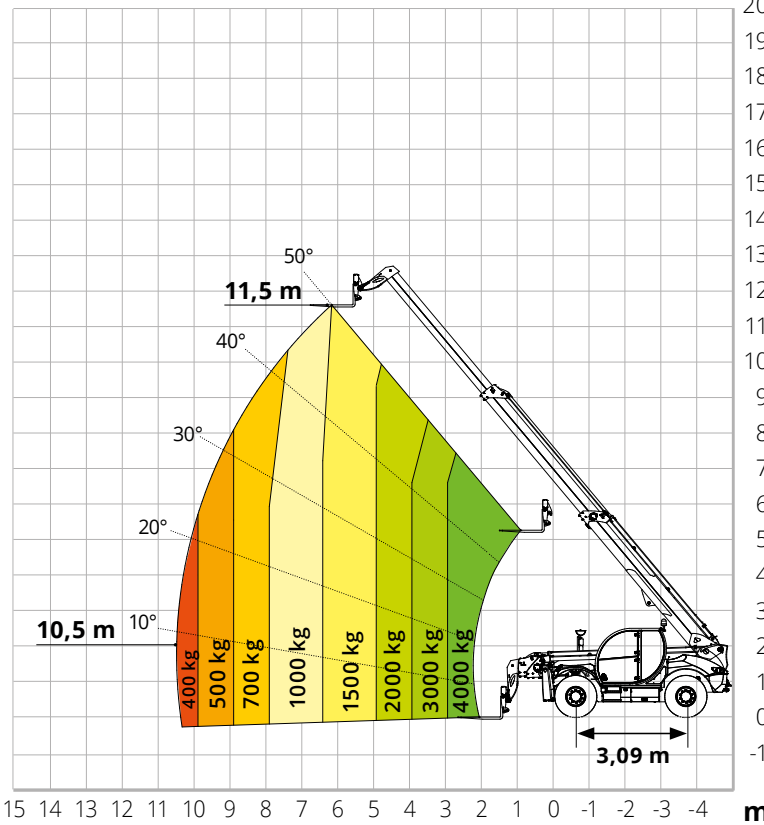
CONSTRUCTION



Load chart
**on fully
 extended
 stabilizers**



Load chart
on tyres



TH 5,5.15 P / TH 5,5.15

Machine model	TH 5,5.15 P		TH 5,5.15		
	Telescopic handler		Telescopic handler		
	Maximum lifting capacity	5.500 kg (center of gravity 600 mm)	5.500 kg (center of gravity 600 mm)		
	Maximum lifting height		14.80 m		
Engine	Type	Deutz TCD 3,6 L4 Stage V	Deutz TCD 3,6 L4 EDG Stage IIIA	Deutz TCD 3,6 L4 Stage V	Deutz TCD 3,6 L4 EDG Stage IIIA
	Rated power	74,4 kW (101,2 hp) @ 2,200 rpm		55,4 kW (75,3 hp) @ 2,200 rpm	
	Maximum torque	410 Nm @ 1,600 rpm		405 Nm @ 1,300 rpm	390 Nm @ 1,300 rpm
	Displacement	3,6 l		3,6 l	
	Cylinders	4 in line		4 in line	
	Engine configuration	Diesel direct injection turbocharged		Diesel direct injection turbocharged	
	Cooling system	Water – intercooler		Water – intercooler	
Transmission	Type	Hydrostatic		Hydrostatic	
	Model	Bosch Rexroth		Bosch Rexroth	
	Maximum pressure	500 bar		500 bar	
	Displacements	Electronically controlled variable displacement pump Variable displacement motor		Electronically controlled variable displacement pump Variable displacement motor	
	Gear box	Dropbox, 2 speeds forward-reverse		Dropbox, 2 speeds forward-reverse	
Axles and brakes	Type	Axles with planetary gearboxes		Axles with planetary gearboxes	
	Rear axle	Oscillating and steering with hydraulic locking		Oscillating and steering with hydraulic locking	
	Front axle	Oscillating and steering with levelling +/- 8°		Oscillating and steering with levelling +/- 8°	
	Service brake	Hydraulically operated wet multi-disk brakes on each axle		Hydraulically operated wet multi-disk brakes on each axle	
	Parking brake	Spring applied hydraulic release Multi-disk brake (S.A.H.R.)		Spring applied hydraulic release Multi-disk brake (S.A.H.R.)	
	Tyres dimensions	445/65 R22,5		445/65 R22,5	
		Max. travel speed		35 km/h	
Performance		Drawbar pull		72 kN	
		Gradeability		54%	
		Turning radius (end of forks)		5,610 mm	
Weights		Total unladen		13,500 kg	
		Front axle unladen (boom retracted and lowered)		5,600 kg	
		Rear axle unladen (boom retracted and lowered)		7,900 kg	
		Fuel tank		145 l	
Tank and system capacities		AdBlue		10 l	
		Hydraulic oil tank		90 l	
		Engine oil tank		9 l	
		Cooling liquid		20 l	
		Max. operating system pressure		350 bar	
Hydraulic circuit for movements		Circuit type		Load sensing	
		Service pump		Bondioli & Pavesi - Variable displacement	
		Controls for boom movements		Danfoss – SIL 2 Electro-proportional valve	
		Controls for stabilizers		Bosch Rexroth – Electro-hydraulic actuators	
		Movements control		1 joystick Danfoss with FNR switch and dead man safety device - Management with CAN bus technology	
		Movements control		1 joystick Danfoss with FNR switch and dead man safety device - Management with CAN bus technology	
Standard met	EN 1459-1: concerning standards for variable-reach trucks				
	EN 13000: concerning standards for mobile cranes				
	Only for model TH 5,5.15 P: EN 280: concerning standards for mobile elevating work platforms				
	FOPS Level 2 / ROPS				
	UE 2016/1628: concerning engine emissions standards				

TH 5,5.15 P / TH 5,5.15

