



This machine is an off-road machine designed to operate on natural or undeveloped land, or construction sites.



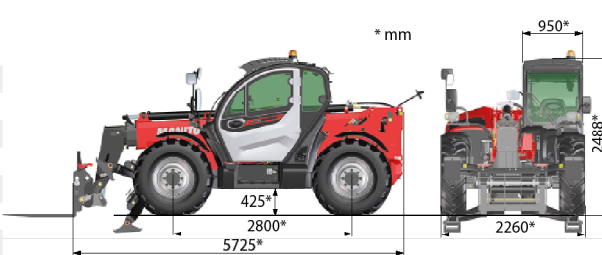
### BASIC INSTRUCTION SHEET

52775227EN-USM1 (A-06/2023)

This document is a simplified reminder for driving the machine, and should in no way be a substitute for the instructions required by Directive 2006/42/EU or "2008 No. 1597 Regulation" (United Kingdom). The instructions, which should be read and understood by the operator beforehand, are available in the machine's cab. All of the instructions, including safety instructions, in the manual should be implemented and enforced. The operator must have received proper training and must comply with the rules in force concerning road traffic.

### Technical characteristics

	MT 75D	MT 100D
Unladen weight	9260 kg	9410 kg
Weight at rated load	12760 kg	12910 kg
Weight on front axle (unladen)	4230 kg	4305 kg
Weight on rear axle (unladen)	5030 kg	5105 kg
Weight on front axle (at rated load)	10890 kg	10965 kg
Weight on rear axle (at rated load)	1870 kg	1945 kg
Traction force (unladen)	6600 daN	6600 daN
Nominal laden drawbar pull	9700 daN	9700 daN



### Before starting, check:

- That the battery cut-off is unlatched.
- The condition of the tires.
- The hydraulic fluid level.
- The engine oil level.
- No water in the fuel pre-filter.
- The brake fluid level.
- The air filter.
- The fuel level.
- The lights.
- The cleanliness and setting of the mirrors.

### Control panel



<b>A</b> TACHOMETER	GEARBOX OIL TEMPERATURE FAULT
<b>B</b> ENGINE WATER TEMPERATURE	HYDRAULIC RETURN FILTER CLOGGING FAULT
<b>C</b> FUEL LEVEL	ENGINE COOLANT LEVEL FAULT
<b>D</b> NOT USED 75D "DEF" LEVEL 100D	ENGINE STOPPED FAULT
PARKING BRAKE	AIR FILTER CLOGGING FAULT
BATTERY CHARGE FAULT	ENGINE FAULT
STEERING SYSTEM OIL PRESSURE FAULT	EXHAUST DECONTAMINATION SYSTEM FAULT 75D
WATER IN FUEL PRE-FILTER FAULT	"SCR" (Selective Catalytic Reduction) FAULT 100D
BRAKING OIL LEVEL FAULT	SOOT LEVEL 75D
ENGINE OIL PRESSURE FAULT	SOOT LEVEL 100D
ENGINE PREHEAT	CRYSTALLIZATION OR SULFURIZATION LEVEL 100D
GEARBOX OIL PRESSURE FAULT	

A warning lamp indicates an operating fault. Some indicator lamps are accompanied by an audible signal. Stop the machine and contact your dealer or rental company as quickly as possible.

### Starting the machine

- 1 - Get into the cab and close the door.
- 2 - Sit down in the seat and put on the seat belt.
- 3 - Deactivate the emergency stop button.
- 4 - Press down on the accelerator pedal.
- 5 - Turn the ignition key.
- 6 - Choose your steering mode.
- 7 - Move up a gear.
- 8 - Activate the reversing shift to move forward or reverse.

### Push button panel

INFORMATION MENU	"SUSPENDED LOAD" MODE
PREFERENCES MENU	STOP & START (OPTION)
BACK	DISABLING "AGGRAVATING" HYDRAULIC MOVEMENT CUT-OFF
CONFIRMATION	TILT CIRCUIT LOCKING (OPTION)
MOVE UP	ATTACHMENT CIRCUIT LOCKING (OPTION)
MOVE DOWN	"STATIONARY MACHINE" EXHAUST REGENERATION
HYDRAULIC MOVEMENT NEUTRALIZATION	TRANSMISSION CUT-OFF
ROTATING BEACON LIGHT	ATTACHMENT CIRCUIT MANUAL OVERRIDE (OPTION)
AUTOMATIC PARKING BRAKE	ATTACHMENT CIRCUIT MANUAL OVERRIDE (OPTION)
"MANUAL MODE" AUTOMATIC PARKING BRAKE	FRAME LEVELING ON LEFT
"BUCKET" MODE	FRAME LEVELING ON RIGHT

### Switches

BOOM HEAD WORKLIGHTS (OPTION)	REAR WINDOW DEFROSTER (OPTION)
FRONT WORKLIGHTS (OPTION)	REAR FOG LIGHTS
FRONT AND REAR WORKLIGHTS (OPTION)	GREEN ROTATING BEACON LIGHT (OPTION)
ROOF WINDSHIELD WIPER	BOOM ELECTRICAL PREDISPOSITION (OPTION)

### Steering selection



- 1 - Front steering wheels (road mode).
- 2 - Front and rear steering wheels in opposite directions (short steering).
- 3 - Front and rear steering wheels in the same direction (crab steering).

Never change the steering mode whilst driving.



### Caution, the risks involved for users when using the machine are, in particular:

Risk of loss of control, risk of loss of lateral and frontal stability of the machine.

The operator must remain in control of the machine. In the event of the machine overturning, do not try to leave the cab during the incident.

**YOUR BEST PROTECTION IS TO STAY FASTENED IN THE CAB.**

### Longitudinal stability limiter and warning device

This device warns the operator of the machine's longitudinal stability limits.

Depending on the type of work required, the operating modes of the longitudinal stability limiter and warning device allow the operator to operate the machine in complete safety.

Lamp A8 indicates that the machine is at the authorized longitudinal stability limit.

If the indicator lamp comes on, perform the "deaggravating" hydraulic movements.

"HANDLING" MODE (USE WITH FORKS)

By default, the device is in "HANDLING" MODE each time the machine is started.

"BUCKET" MODE (NOT USED)



"SUSPENDED LOAD" MODE (USE WITH HOIST) offering a higher margin of error.

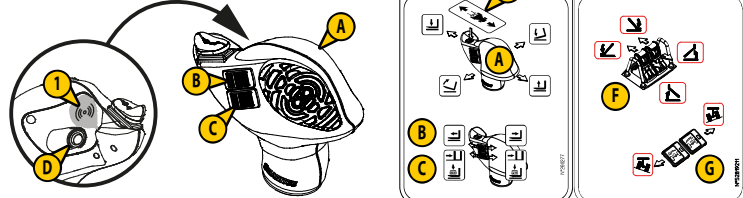
Hold down the button, "SUSPENDED LOAD" MODE is confirmed by an audible signal and the indicator lamp coming on.

Press this button again or switch off the ignition with the ignition key to return to "HANDLING" MODE.



### Movement controls

1 - PERMITTED MOVEMENT



A - Lifting and tilting.

B - Telescoping.

C - Attachment (OPTION).

D - (OPTION).

E - Forward/reverse gear.

F - Stabilizers.

G - Frame leveling.

### Fuses and relays

In the cab



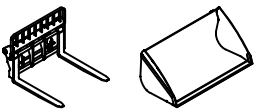
See the machine's instruction manual for the complete list of fuses.

Under the hood



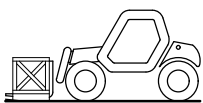
### Attachments

**Before any use, ensure that the attachment is properly locked**



See the machine's instruction manual for the gripping device and list of attachments.

### Daily maintenance



Carry out a general inspection around the machine.



Check the engine oil level.



Check the coolant level.



Check the fuel pre-filter.



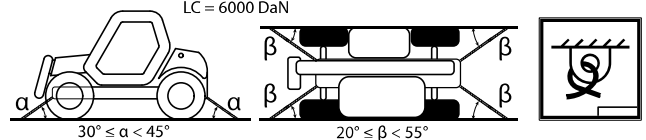
Check the longitudinal stability limiter and warning device.

Scan for more information.



### Lashing

LC = 6000 DaN



Fix the chocks to the platform at the front and at the back of each tire.

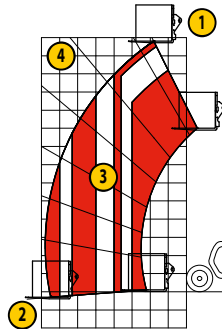
Also fix the chocks to the platform on the inside of each tire.

Secure the machine to the flatbed with straps, in the anchoring points 1 provided.

In order to ensure the machine is securely lashed to the flatbed, observe the lashing angles ( $\alpha$ ) and ( $\beta$ ) and the resistance (LC) of the straps.

Tighten the straps.

### How to read a load chart



**Read the function sheets for the load charts and hydraulic controls.**

**Comply with the load chart(s).**

1 - Load lifting height.

2 - Load outreach distance.

3 - Zone accessible depending on the load.

4 - Zone inaccessible.